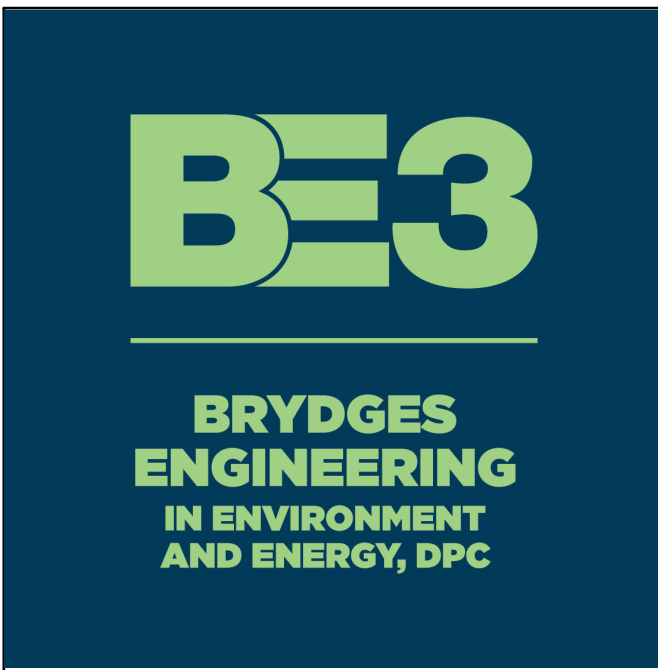


- LEGEND**
- ③ APPROXIMATE LOCATION OF ASBESTOS CONTAINING TAN JOINT COMPOUND ON WALLS AND CEILINGS
 - ⑤ APPROXIMATE LOCATION OF ASBESTOS CONTAINING TAN COVE BASE MASTIC
 - ⑩ APPROXIMATE LOCATION OF ASBESTOS CONTAINING WHITE TEXTURED CEILING
 - ⑳ APPROXIMATE LOCATION OF ASBESTOS CONTAINING BROWN CERAMIC TILE FLOOR TILE ADHESIVE



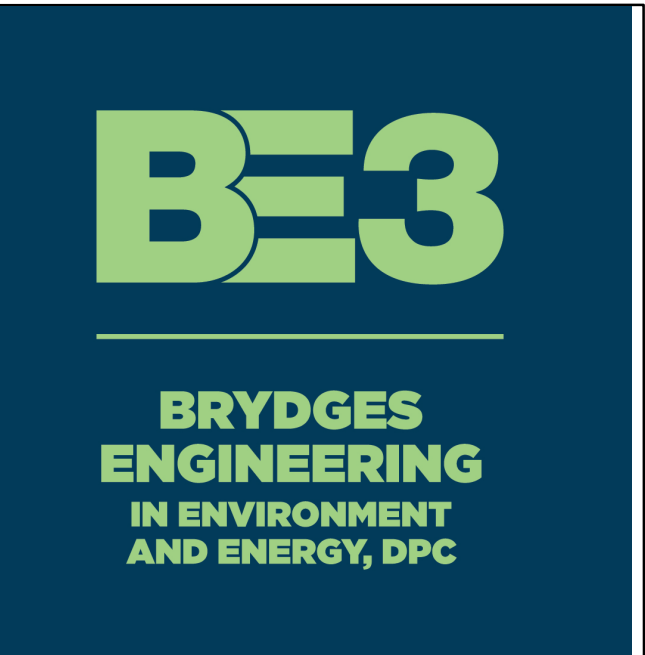
ROCHESTER HOUSING AUTHORITY

ASBESTOS LOCATION PLAN
 BOND HAMILTON APARTMENTS
 5-15 BOND STREET
 BASEMENT FLOOR PLAN

DATE ISSUED: January 12, 2024

△
△
△
△

AL-101



ROCHESTER HOUSING AUTHORITY

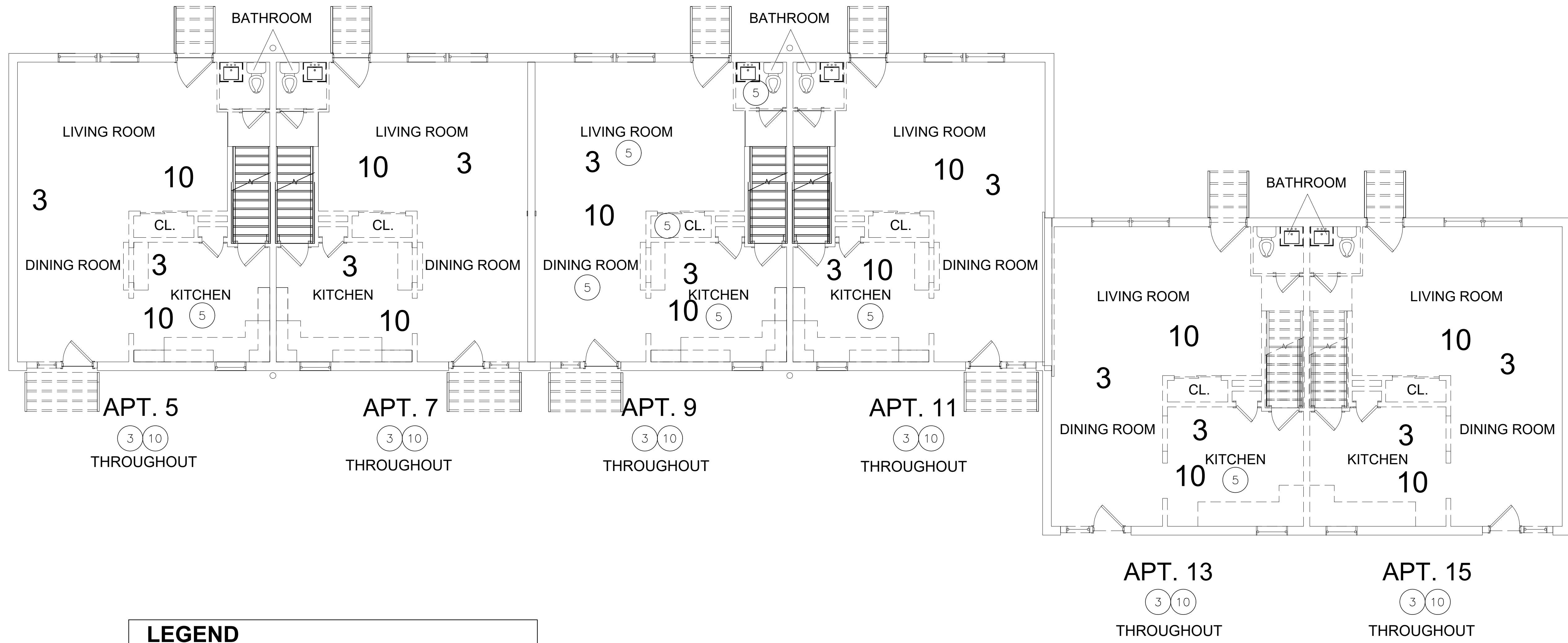
ASBESTOS LOCATION PLAN

BOND HAMILTON APARTMENTS
5-15 BOND STREET
FIRST FLOOR PLAN

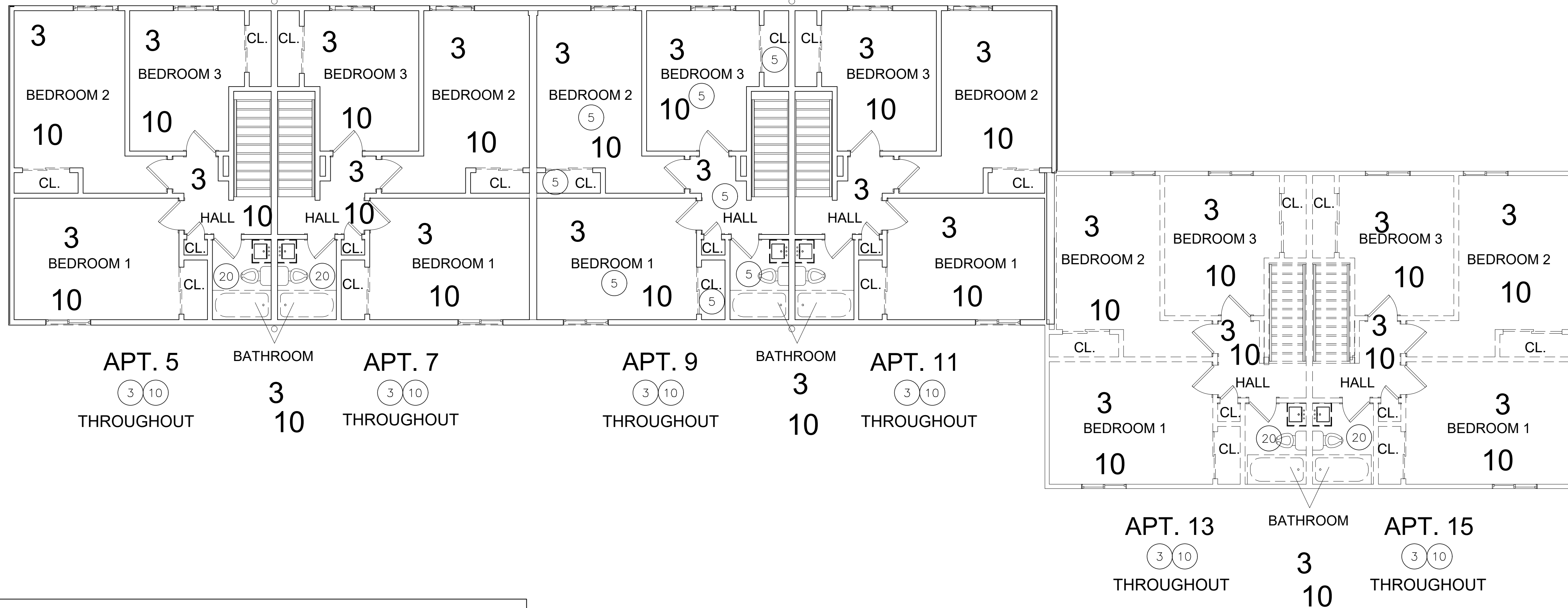
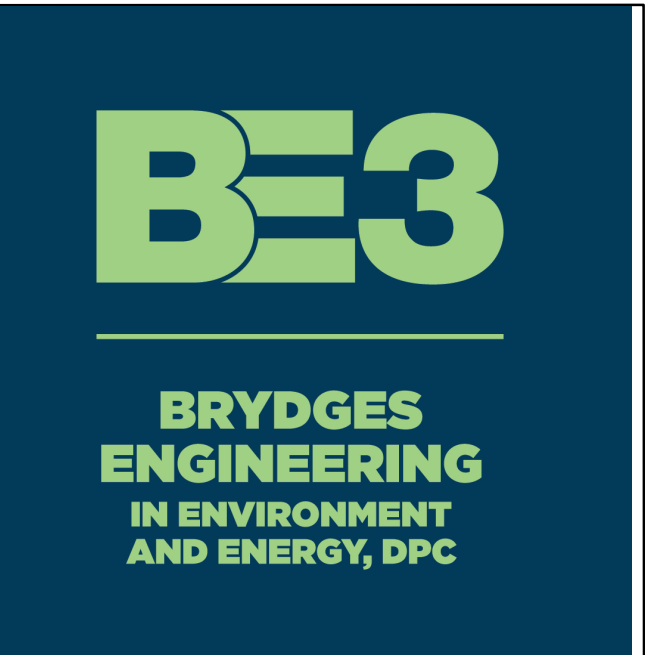
DATE ISSUED: January 12, 2024

△
△
△

AL-102



- LEGEND**
- ③ APPROXIMATE LOCATION OF ASBESTOS CONTAINING TAN JOINT COMPOUND ON WALLS AND CEILINGS
 - ⑤ APPROXIMATE LOCATION OF ASBESTOS CONTAINING TAN COVE BASE MASTIC
 - ⑩ APPROXIMATE LOCATION OF ASBESTOS CONTAINING WHITE TEXTURED CEILING
 - ⑳ APPROXIMATE LOCATION OF ASBESTOS CONTAINING BROWN CERAMIC TILE FLOOR TILE ADHESIVE



LEGEND

- ③ APPROXIMATE LOCATION OF ASBESTOS CONTAINING TAN JOINT COMPOUND ON WALLS AND CEILINGS
- ⑤ APPROXIMATE LOCATION OF ASBESTOS CONTAINING TAN COVE BASE MASTIC
- ⑩ APPROXIMATE LOCATION OF ASBESTOS CONTAINING WHITE TEXTURED CEILING
- ②① APPROXIMATE LOCATION OF ASBESTOS CONTAINING BROWN CERAMIC TILE FLOOR TILE ADHESIVE

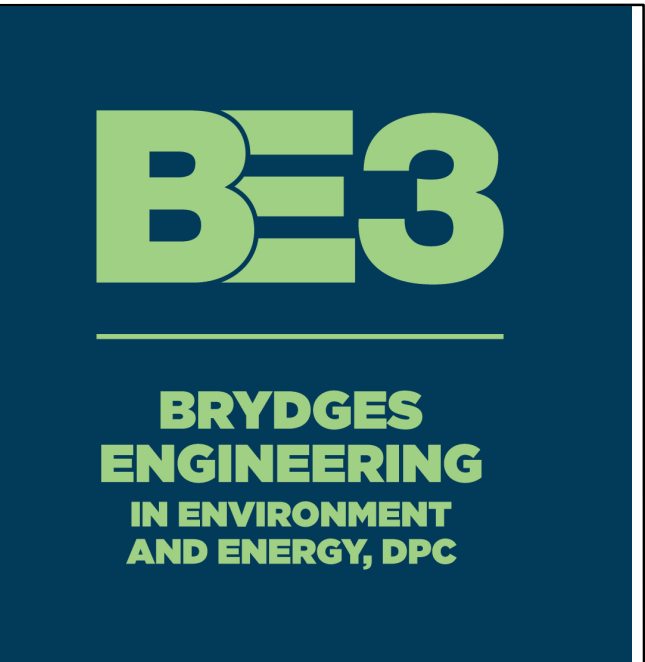
ROCHESTER HOUSING AUTHORITY

ASBESTOS LOCATION PLAN
 BOND HAMILTON APARTMENTS
 5-15 BOND STREET
 SECOND FLOOR PLAN

DATE ISSUED: January 12, 2024



AL-103



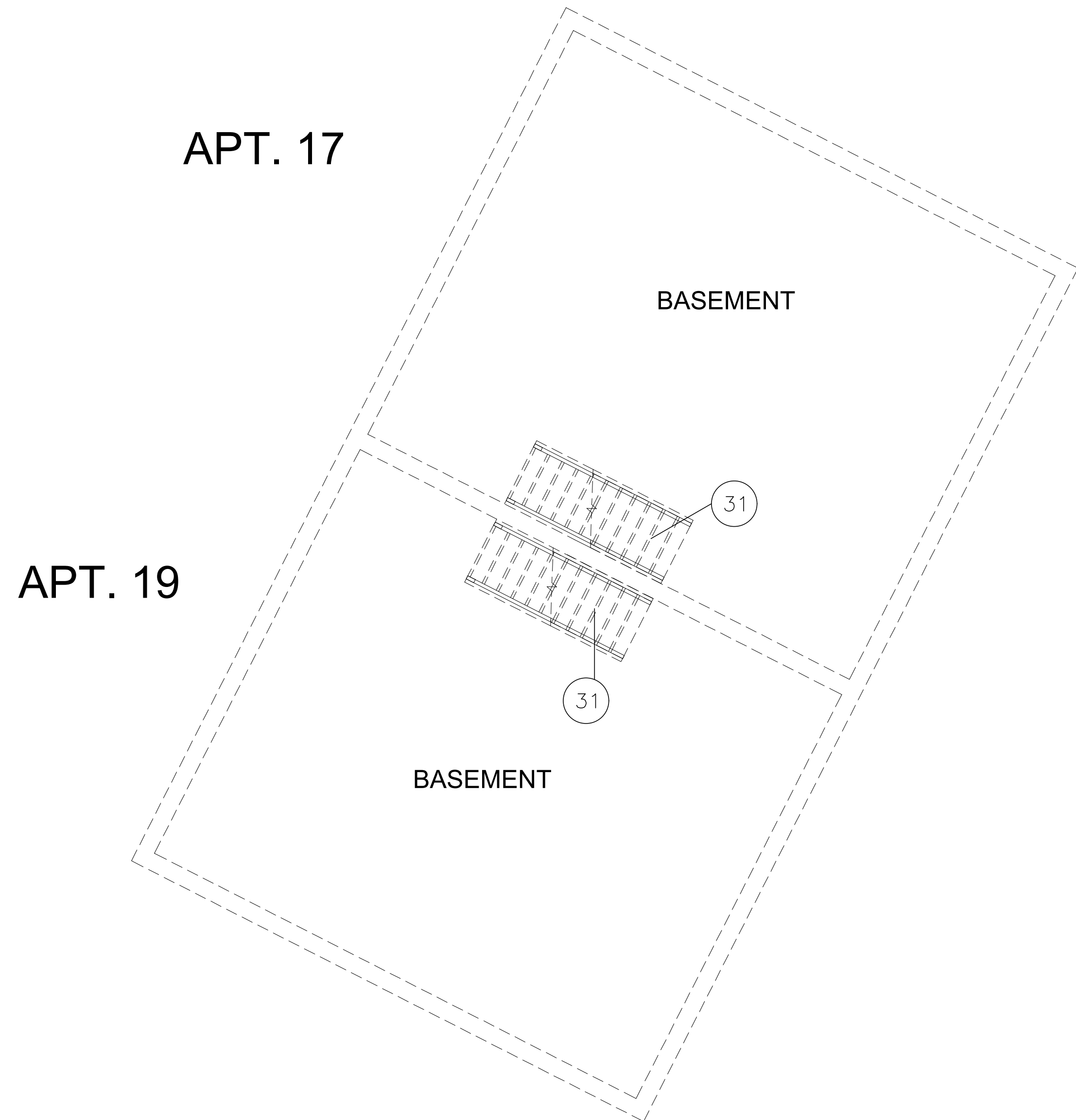
ROCHESTER HOUSING AUTHORITY

ASBESTOS LOCATION PLAN
BOND HAMILTON APARTMENTS
17-19 BOND STREET
BASEMENT FLOOR PLAN

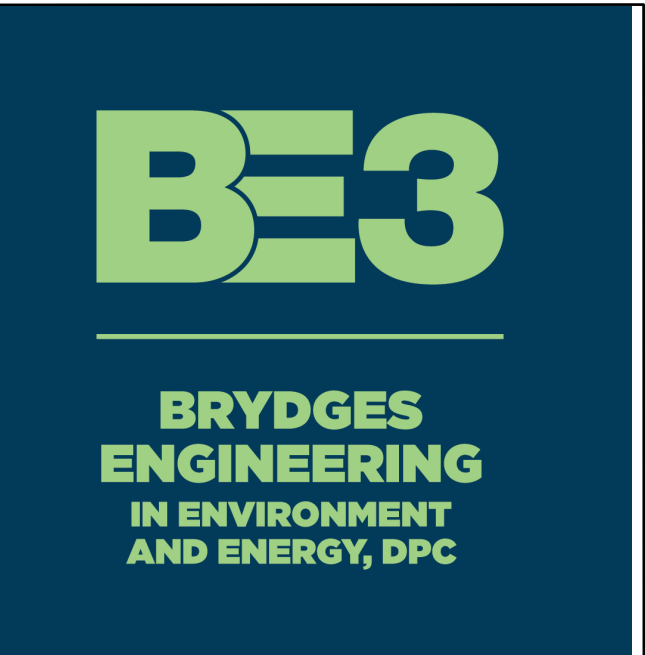
DATE ISSUED: JANUARY 12, 2024

△
△
△

AL-101



- LEGEND**
- 20 APPROXIMATE LOCATION OF ASBESTOS CONTAINING BROWN CERAMIC TILE FLOOR TILE ADHESIVE
 - 31 APPROXIMATE LOCATION OF ASBESTOS CONTAINING TAN JOINT COMPOUND ON WALLS AND CEILINGS
 - 33 APPROXIMATE LOCATION OF ASBESTOS CONTAINING WHITE TEXTURED CEILING

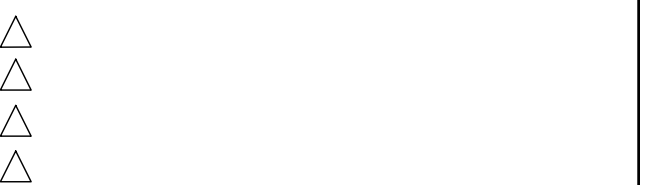


ROCHESTER HOUSING AUTHORITY

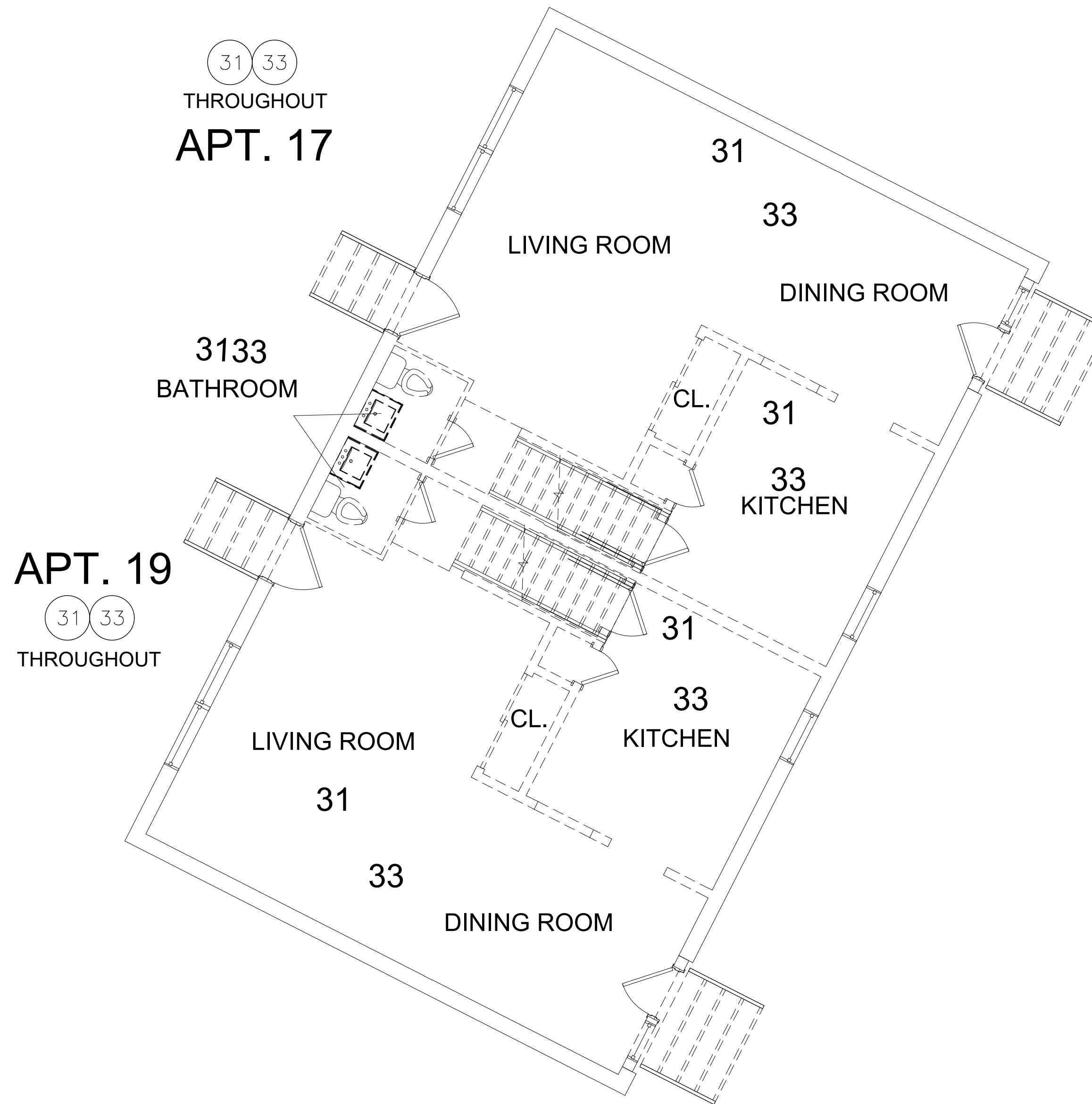
ASBESTOS LOCATION PLAN

BOND HAMILTON APARTMENTS
17-19 BOND STREET
FIRST FLOOR PLAN

DATE ISSUED: JANUARY 12, 2024



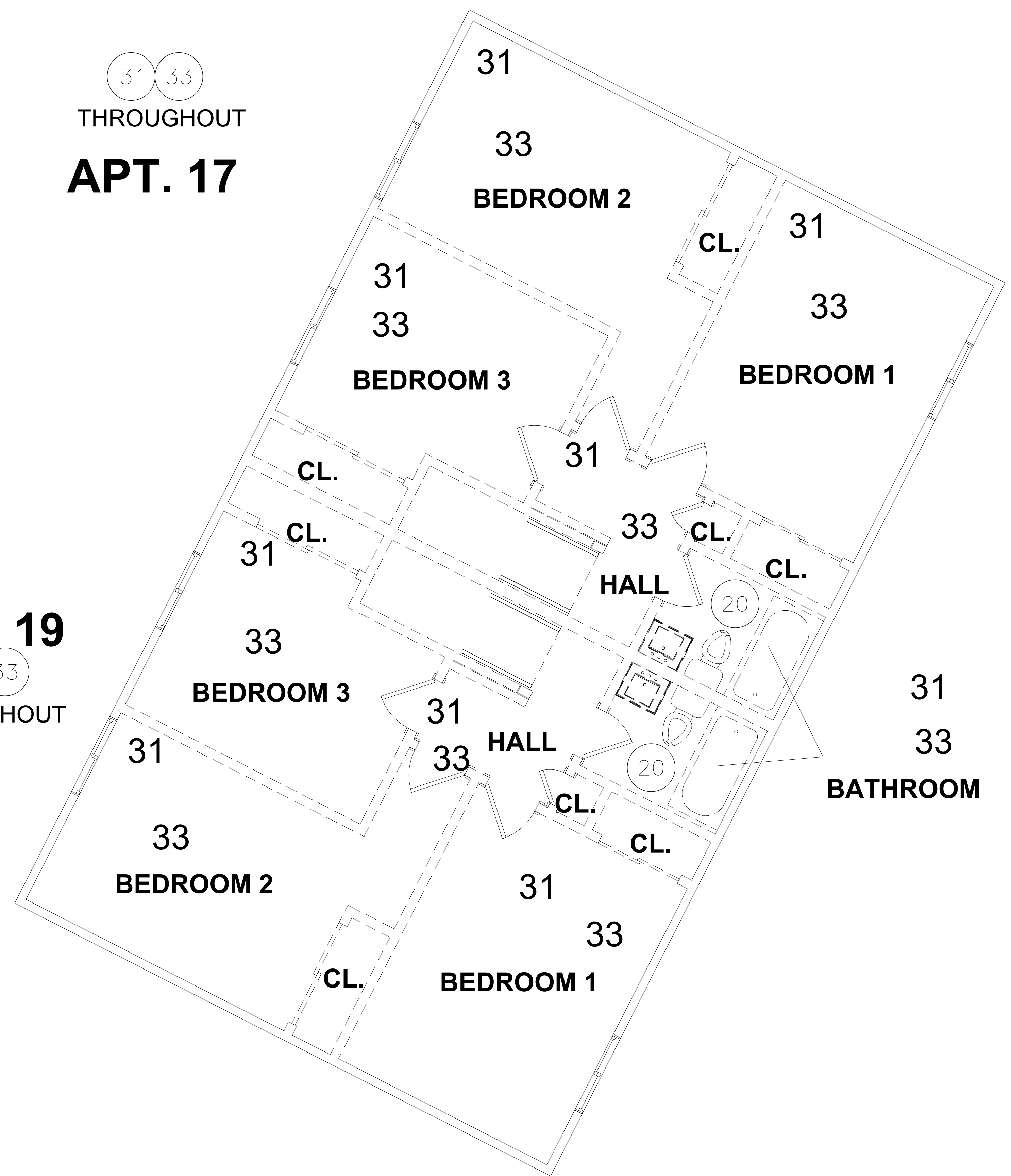
AL-102



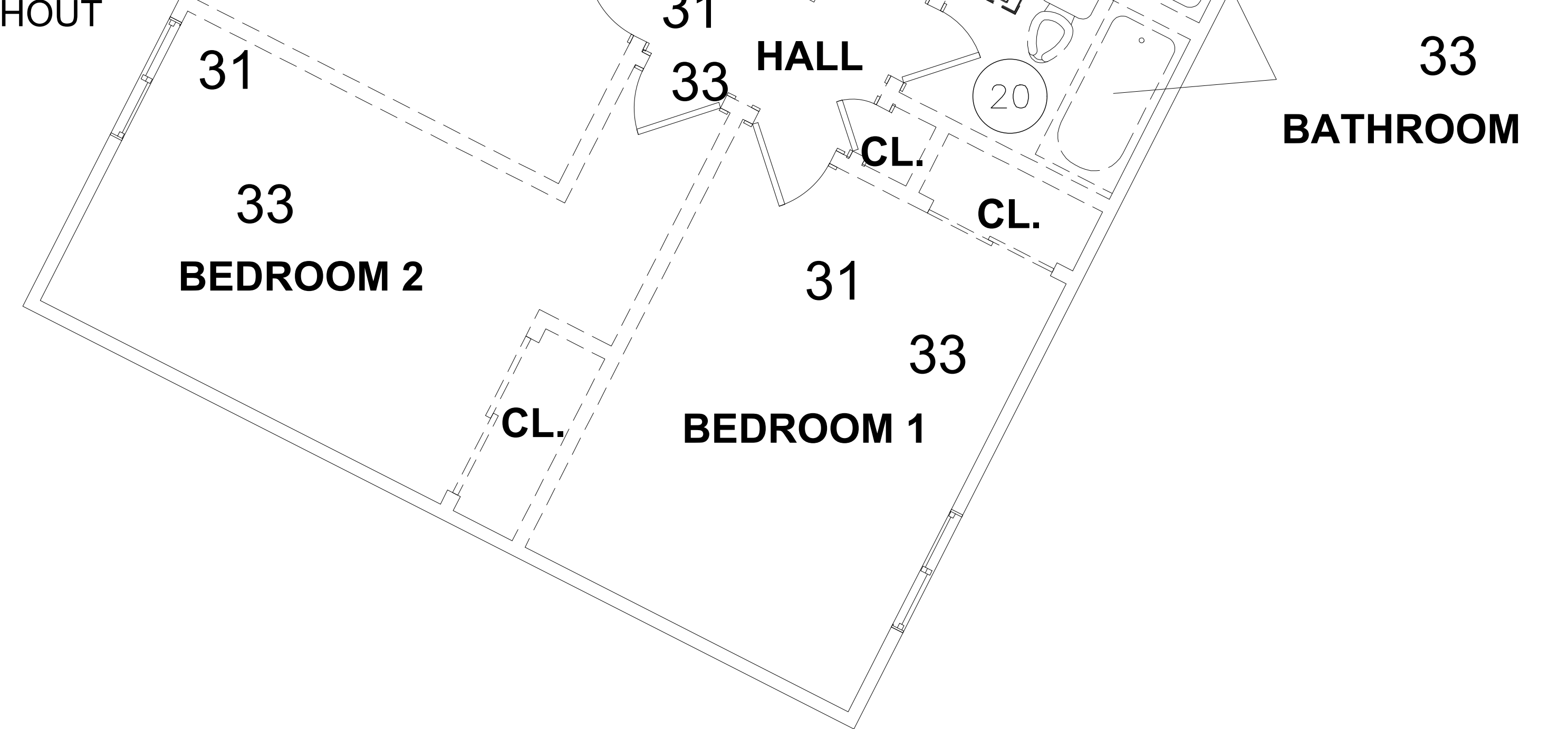
LEGEND

- 20 APPROXIMATE LOCATION OF ASBESTOS CONTAINING BROWN CERAMIC TILE FLOOR TILE ADHESIVE
- 31 APPROXIMATE LOCATION OF ASBESTOS CONTAINING TAN JOINT COMPOUND ON WALLS AND CEILINGS
- 33 APPROXIMATE LOCATION OF ASBESTOS CONTAINING WHITE TEXTURED CEILING

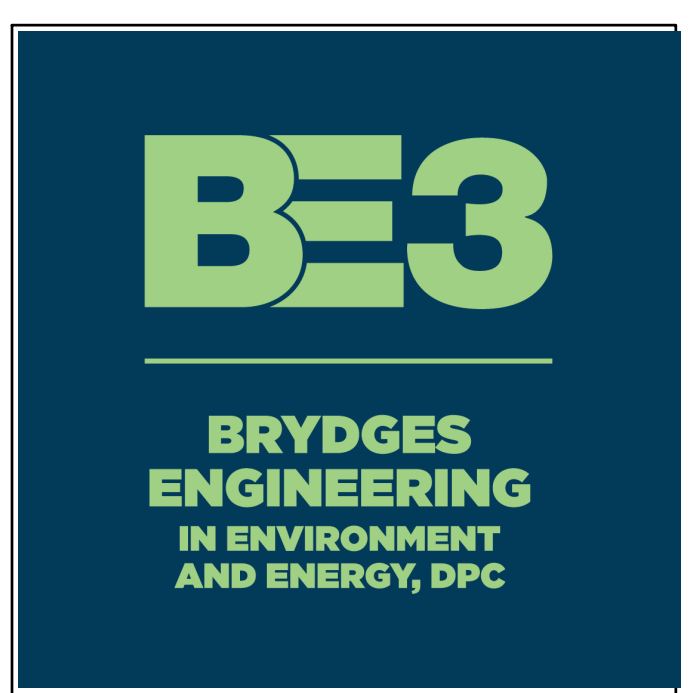
31 33
THROUGHOUT
APT. 17



31 33
THROUGHOUT
APT. 19



- LEGEND**
- 20 APPROXIMATE LOCATION OF ASBESTOS BROWN CERAMIC TILE FLOOR TILE ADHESIVE
 - 31 APPROXIMATE LOCATION OF ASBESTOS CONTAINING TAN JOINT COMPOUND ON WALLS AND CEILINGS
 - 33 APPROXIMATE LOCATION OF ASBESTOS CONTAINING WHITE TEXTURED CEILIN



ROCHESTER HOUSING AUTHORITY

ASBESTOS LOCATION PLAN

BOND HAMILTON APARTMENTS
17-19 BOND STREET
SECOND FLOOR PLAN

DATE ISSUED: January 12, 2024

△
△
△
△

AL-103